

WhistleB®
By NAVEX



“Tell Us” service presentation

Our Whistleblowing service “Tell Us”



We strive to maintain transparency as well as high business ethics. The whistleblowing service “Tell Us” provides an opportunity to communicate on suspected wrongdoings affecting people, our organisation, society or the environment.

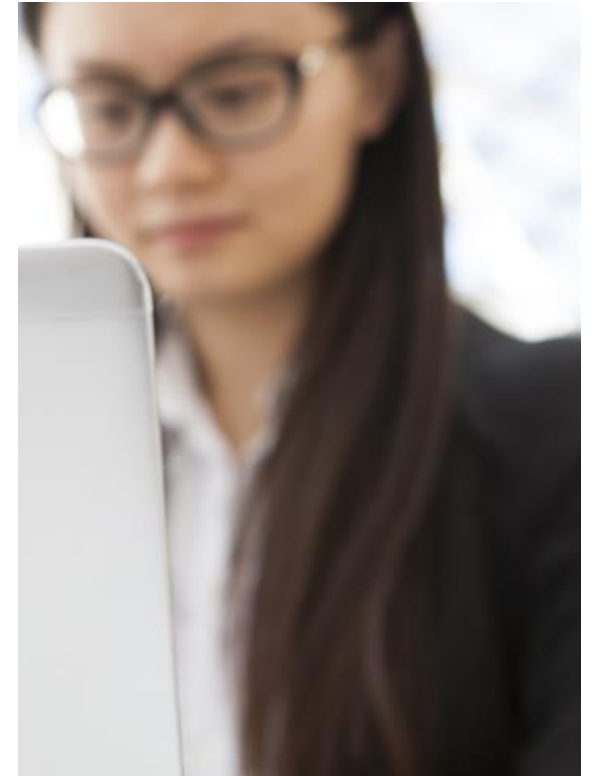
The whistleblowing service “Tell Us” makes wrongdoings less likely to occur in the first place and shows our commitment to operate in a fair way.

We want to do what is right.

When to use “Tell Us”?

Reported issues include criminal offences, irregularities and violations or other actions in breach of EU or national laws, within a work-related context, for example:

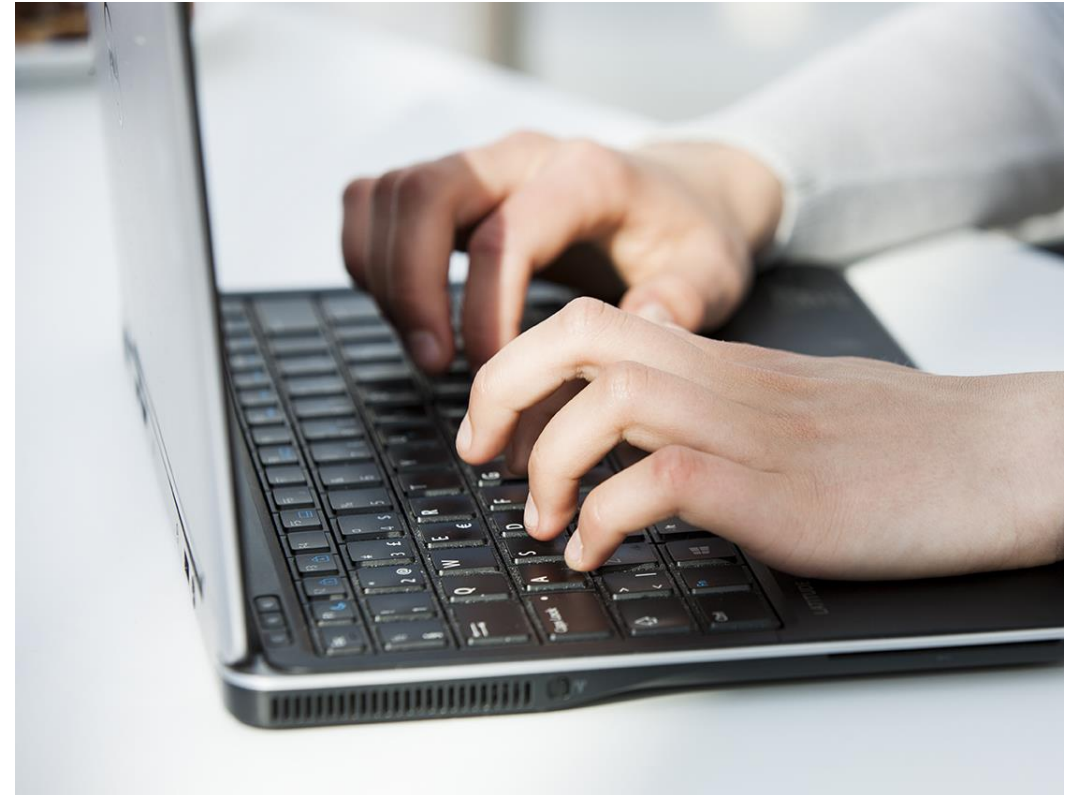
- ✓ *Corruption and financial irregularities*
- ✓ *Health and safety violations*
- ✓ *Environmental violations*
- ✓ *Privacy violations*



The whistleblower should feel confident

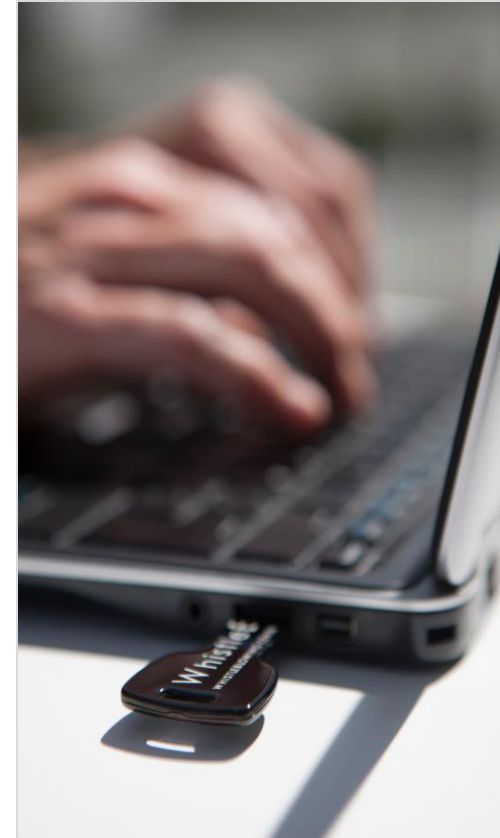
- ✓ A whistleblower is protected from retaliations according to our LEG-4008-N “Whistleblower Hotline Tell Us” . You do not need to have firm evidence for expressing a suspicion, provided that you are acting in good faith.
- ✓ Whistleblowing messages are treated confidentially.
- ✓ We respect those who want to communicate anonymously. Therefore, we offer a channel for anonymous communication, provided by a third-party, WhistleB.

The third-party solution safeguards the anonymity of the person reporting and protects sensitive data.



How is the anonymity of the person reporting protected?

- ✓ “Tell Us” is separate from the IT environment of the organisation.
- ✓ An anonymous person cannot be tracked. WhistleB does not track IP addresses or other data that could identify a person sending a message.
- ✓ All reports are encrypted and can only be decrypted by designated individuals. WhistleB cannot decrypt and read reports.



Anonymous reporting and dialogue – how does it work?

1. A person sends a message through the external web-based Reporting Channel, also accessible through smart phones
2. Further dialogue with the anonymous person is possible thanks to a personal ID and password given at the end of the reporting session
3. The person sending the message can log in and read a response. The dialogue can continue as long as both parties wish.

Watch a short [introduction film](#)



We safeguard a serious and reliable investigation process

- ✓ Data is treated according to applicable data protection laws and stored in the EU. Personal data can be corrected and is deleted when the investigation is completed.



WhistleB Whistleblowing Centre

More than 25 years of experience in the field of compliance and business ethics. Global service, available in 60 languages and in 150+ countries.

More information: www.whistleb.com

ASSESSMENTS AND CERTIFICATIONS

- ✓ GDPR compliance. External assessment.
- ✓ DPIA Data Protection Impact assessment
- ✓ ISMS compliance with ISO 27001. External assessment.
- ✓ ISO 27001 and ISO 27018 certifications, Microsoft Azure
- ✓ Regular vulnerability and penetration tests. External assessment.
- ✓ WhistleB is a signatory of UN global Compact



[Visit the WhistleB Trust Centre »](#) to learn more about whistleblowing and data privacy.

To access the reporting channel, please visit:

<https://report.whistleb.com/lat-nitrogen>

